



UNITED NATIONS  
Office for the Coordination of Humanitarian Affairs  
occupied Palestinian territory

# GAZA STRIP: ACCESS AND MOVEMENT

JULY 2010







United Nations Office for the Coordination of Humanitarian Affairs

# WEST BANK: ACCESS AND CLOSURE

July 2010

## PHYSICAL CLOSURES

- Internal Checkpoint (fully staffed)
- Green Line Checkpoint\*
- Internal Partial Checkpoint
- Road Gate normally closed
- Road Gate normally open
- Observation Tower
- Earthmound
- Roadblock
- Tunnel/Underpass\*
- Earth Wall
- Road Barrier
- Trench

\* Not counted in the total closure figures.

## West Bank Barrier

- Constructed<sup>1</sup>
- Under Construction
- Planned Route<sup>2</sup>
- Planned Re-routing
- Barrier Gate<sup>3</sup>

- The constructed and under construction Barrier route is extracted from aerial photos, (May 2009), compared to data provided by the Council for Peace and Security (CPS, APR) and verified by field surveys as of July 2010.
- The planned Barrier route is based on the Israeli government map, published in April 2006 and data provided by Shaul Aneel (Council for Peace and Security) in July 2009.
- Fifty-seven Barrier gates allow restricted access to Palestinians who hold permits, or by prior coordination.

## ACCESS

### Closed and Restricted Areas

- Israeli military base  
Access is prohibited
- Israeli closed military area  
Access is prohibited
- Existing and projected 'closed areas' behind the Barrier  
Access is limited to permit holders

### Israeli Settlements

- Outpost
- Land cultivated by settlers
- Settlement municipal area
- Settlement built-up and outer limit

### Palestinian Areas

- Built-up
- < 500 Residents
- 500 - 20,000
- > 20,000
- Governorate Boundary

### Roads

- Prohibited or Restricted Palestinian vehicle use
- Main road
- Other road

### Oslo Interim Agreement (1994-1999)

- Area A<sup>1</sup>
  - Area B<sup>2</sup>
  - Special Case (H2)<sup>3</sup>
  - Intended Nature Reserve
  - Area C<sup>4</sup>
- Full Palestinian civil and security control
  - Full Palestinian civil control and joint Israeli-Palestinian security control
  - Hebron Agreement
  - Full Israeli control over security, planning and construction

## THE WEST BANK BARRIER

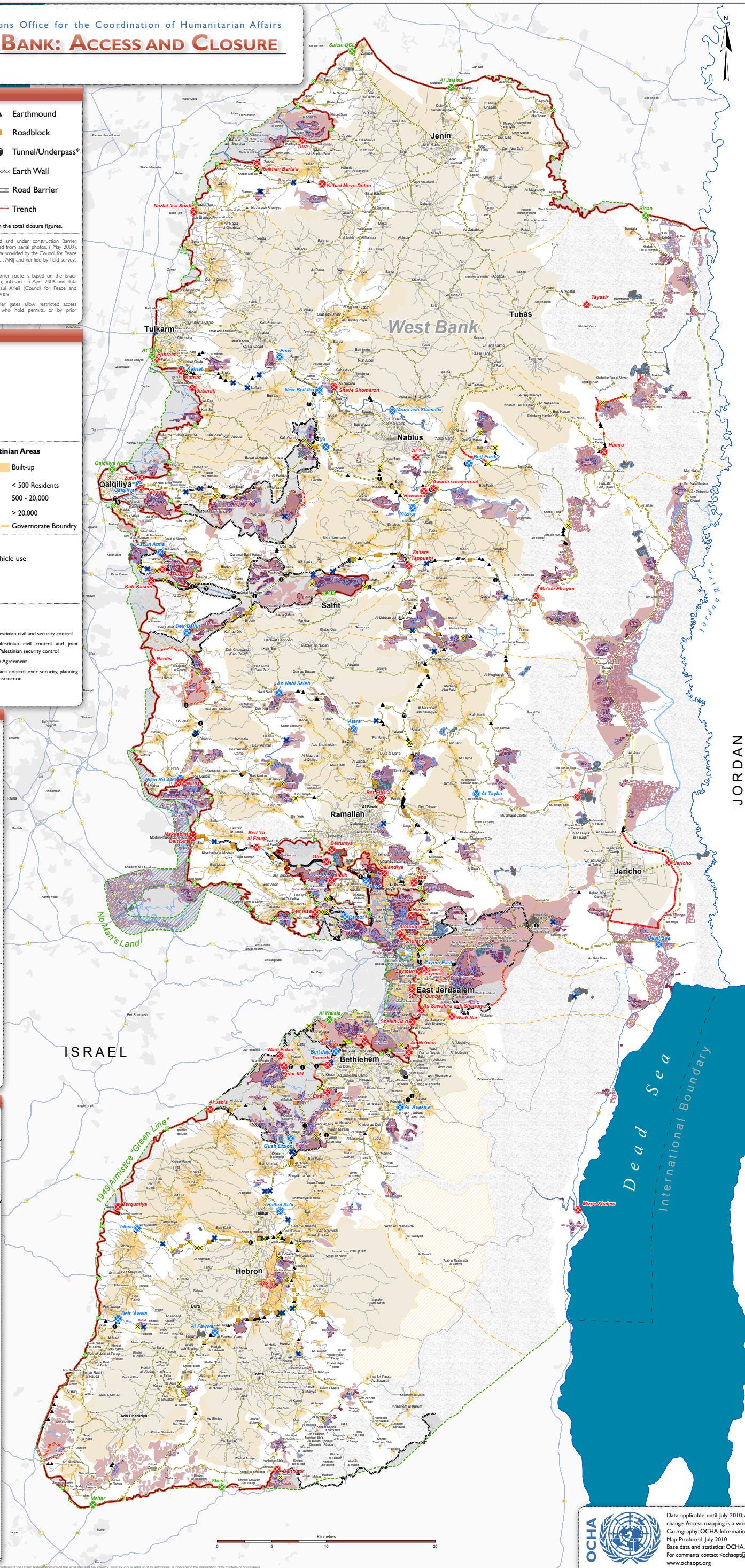
A complex series of concrete walls, electronic fences, and other obstacles to control Palestinian pedestrian and vehicular movement. Construction of the Barrier within the West Bank, including East Jerusalem, continues, contrary to the advisory opinion of the International Court of Justice.



Controls movement through the West Bank Barrier. Permits, or prior coordination, are required for Palestinians to access their lands.

## REGIONAL CONTEXT

- International Border
- Green Line



## CLOSURE

A policy of physical barriers, permit requirements and other administrative restrictions are used to control Palestinian pedestrian and vehicular movement.



A barrier staffed by the Israeli Army and/or Border Police with observation towers and/or other physical structures used to control pedestrian and vehicular access.



An established checkpoint operating periodically.



An elevated military tower to monitor/control Palestinian pedestrian and vehicular access.



A mound of rubble, dirt and/or rocks used to obstruct vehicle access.



An underpass for Palestinian vehicles located beneath a West Bank road primarily for Israeli settler use.



A series of 1 metre concrete blocks used to obstruct vehicle access.



A ditch used to prevent vehicles from crossing.



A metal gate, often manned by the Israeli army, used to control movement along roads.



Continuous fencing along roads which prevents Palestinian vehicular, agricultural and pedestrian access to roads used by Israeli settlers.

## THE PERMIT SYSTEM



Palestinians are required by the Israeli army to obtain various permits to facilitate movement through checkpoints to reach East Jerusalem and other West Bank areas including those located between the Barrier and the Green Line. Permits types vary depending on location, person and purpose.



Data applicable until July 2010. Access and closure data is collected by OCHA field staff and is subject to change. Access mapping is a work in progress. Maps are updated periodically.  
Cartography: OCHA Information Management Unit  
Map Produced: July 2010  
Base data and statistics: OCHA, JRC, PA-MOPIC  
For comments contact: <ochaopt@un.org> or tel. +972 (0)2 582-9962  
www.ochaopt.org

MAP IS PROVIDED  
FREE OF CHARGE  
NOT FOR SALE